

**ROSS VALLEY FIRE DEPARTMENT  
STAFF REPORT**

For the meeting of: October 8, 2014

To: Board of Directors

From: Mark Mills, Fire Chief *MM*

Subject: Chipping Program

---

**RECOMMENDATION:**

Staff recommends that the Board provides direction to authorize and purchase a chipper truck to facilitate the Ross Valley Fire Department Chipping Program by allocating up to \$80,000 from the Undesignated Reserve fund.

**BACKGROUND:**

Residential "Chipper Days" have been held over the years within the Ross Valley Fire Department Jurisdiction, on multiple occasions and encompassing numerous locations. The chipper events are usually held at the expense of the individual property owners, Towns, or homeowner's associations with matching funds at times, from the Fire Safe Marin Council. These events have been relatively successful and have resulted in the removal of unwanted limbs and brush from individual properties. The limitation of this type of removal is that the property owner is responsible for transporting the limbs and brush to the chipper site. It would be much more advantageous to the property owners, for the chipper to be brought to their property, to pick up and chip the brush at the site. The chips could then be hauled away.

**DISCUSSION:**

While pursuing purchasing and funding options, the Fire Safe Marin Council was awarded \$27,000 that could be used towards the purchase of chipper. The chipper has been delivered and is on site today.

The ultimate goal of the program will be to provide curb-side chipping and removal chips from the individual property owners. The Marin Sanitary Service has agreed to a private / public partnership that would allow the RVFD to dispose of the green waste (chips) at no charge to the department, at their San Rafael site. Additionally, the Marin Sanitary Service has agreed to assist in picking up the roadside debris and chipping it at the facility as needed.

The next step in the project would be the purchase of chipper truck that can tow the chipper and haul away the chips. The trucks are commercially available and range in price depending on chassis and dump body size.

The average prices range from \$79,550 for a 2015 model down to \$46,000 for a 2009 model. Staff recommends a newer model chassis so as to minimize upkeep and maintenance costs at the beginning of the program.

**AGENDA ITEM #** 3  
**Date** 10/8/14

## **FINANCIAL IMPACT**

The Undesignated Reserve fund balance currently is \$544,596. Staff recommends utilizing up to \$80,000 from that fund to complete the chipper truck purchase which will result in a fund balance of \$464,596.

## 2015 FORD F650 BOX TRUCK - STRAIGHT TRUCK,CHIPPER TRUCK,CREW CAB,DUMP TRUCK,FLATBED DUMP,GARBAGE TRUCK,LANDSCAPE TRUCK,OTHER TRUCK,SHREDDER TRUCK in WHITTIER, CALIFORNIA

DETAILS

SHIPPING

SHARE  
THISCONTACT  
SELLER

**Price: \$79,550** Specification

Year: 2015  
Make: FORD  
Model: F650  
Class: CLASS 6 (GV  
Category: Box Truck  
Engine Make: Cummins  
Engine Size: 6.7 Liters

[More](#)
[Get a CARFAX Record Check](#)

### Seller Information

#### National Fleet Sales

(888) 811-7826

[See All Inventory](#)

Reference Stock #:  
260090

312 14th st  
Whittier, CA  
90601 [\(Map\)](#)

Attn: National Fleet Sales \*required

Hello, I'm interested in your **2015 FORD F650** Stock #: **260090**. Please contact me

at your earliest convenience ☐ , you can

reach me at  Phone  or at

Email

### Comments

☐ I have a trade in

☒ Would you like to get our newsletter and special offers via email?  Thank you,  Full Name

2313

 Type image number

Send

[Send us Feedback!](#)

### Find Similar Trucks new search



**2015 FORD F650**  
Box Truck - Straight Truck, Chipper Truck, Crew Cab, Dump Truck, Flatbed Dump, Garbage Truck, Landscape Truck, Other Truck, Shredder Truck  
**\$79,550**

Whittier, CA



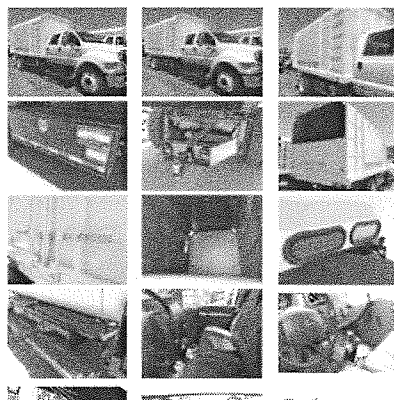
**2014 ADVANCED FABRICATORS 16CHD72A**  
Chipper Truck, Dump Truck, Flatbed Dump, Landscape Truck, Logging, Other Truck Bodies  
**\$12,450**

Pompano Beach, FL



**2015 FORD F550**  
Crew Cab, Dump Truck, Flatbed Dump, Landscape Truck  
**\$52,995**

Raleigh, NC



### Features

Air Conditioning, AM/FM Radio, Trip Odometer, Tilt Steering Wheel, Bed Liner, Dually, Heavy Duty Transmission, PTO Prep, Steel Wheels, Turbo, Hitch, EPA Compliant, CARB Compliant

### Description

2015 FORD F650 Box Truck - Straight Truck, Chipper Truck, Crew Cab, Dump Truck, Flatbed Dump, Garbage Truck, Landscape Truck, Other Truck, Shredder Truck, 2015 FORD F-650 CREW CAB CHIPPER DUMP, DUMP TRUCK, LANDSCAPE DUMP, LANDSCAPE BODY, OXFORD WHITE EXTERIOR, STEEL GRAY VINYL INTERIOR, XL TRIM PACKAGE, 6.7L 240HP CUMMINS DIESEL, 560 TRQ, 6 SPEED AUTOMATIC ALLISON 2500 RUGGED DUTY TRANSMISSION, 6.50 REAR AXLE RATIO, 26,000 GVWR, SYNTHETIC FRONT WHEEL LUBE, PARKING BRAKE, HYDROLIC BRAKES, 2 12V 1900 CCA BATTERIES, 65 GAL FUEL TANK, DRIVERS CHAIR CAPTIAN, PASSENGER BENCH, STAINLESS STEEL WEST COAST STYLE MIRRORS, STAINLESS STEEL CONVEX MIRRORS, 22.5 STEEL WHEELS, CARB COMPLIANT, 16" CHIPPER DUMP BODY, RUGBY LR-28 PTO HOIST, 20 TON LIFTING CAPACITY AT 45 DEGREE DUMP ANGLE, IN CAB CONTROLS, BACK UP ALARM, CROSS MEMBERS 12" ON CENTER, RECESSED LED REAR LIGHTS, 6" TALL SIDES WITH 12" TAPER, 2 SWING OUT REAR BARN STYLE DOORS, APPROX 30" TALL, FABRICATED A-FRAME REAR HITCH WITH PINTLE HITCH AND 2 D RINGS, 6 AND 7 WAY ELECTRICAL CONNECTIONS, 1 UNDERBED TOOL BOX PASSENGER SIDE, 60X18X18, T-HANDLE. \*If you find another vehicle in a competitor's printed ad that is priced lower than ours, we will match the price. The competitor's ad must be local and current, and the product must be the identical item with same MSRP and options. When making a purchase from us you must bring proof of the lower price and that it is still in effect, in order to price match. Low Price Promise Guarantee is only valid on New and Unused vehicles. Pricing includes all applicable rebates. Rebates may vary depending on model. Taxes are not included in price. Taxes are charged off of sale price before rebates. Rebates are subject to change at any time. Other restrictions may apply. See dealer for details.



**2008 GMC C6500**  
Armored Truck, Beverage Truck, Box Truck - Straight Truck, Bucket Truck - Boom Truck, Cab Chassis, Catering Truck - Food Truck, Chipper Truck, Contractor Truck, Crew Cab, Dry Van, Flatbed Dump, Flatbed Truck, Grapple Truck, Landscape Truck, Wrecker Tow Truck  
**Call for Price**

Houston, TX



**2008 FREIGHTLINER BUSINESS CLASS M2 106**  
Box Truck - Straight Truck, Cab Chassis, Catering Truck - Food Truck, Chipper Truck, Contractor Truck, Crane Truck, Dry Van, Dump Truck, Flatbed Dump, Flatbed Truck, Food Truck, Fuel Truck - Lube Truck, Mechanics Truck, Moving Van, Other Truck, Refrigerated Truck, Rollback Tow Truck, Stake Bed, Utility Truck - Service Truck  
**\$34,900**

Mesa, AZ



**2006 GMC TOPKICK**  
Cab Chassis, Catering Truck - Food Truck, Chipper Truck, Contractor Truck, Dry Van, Dump Truck, Flatbed Dump, Flatbed Truck, Food Truck, Fuel Truck - Lube Truck, Landscape Truck, Mechanics Truck, Utility Truck - Service Truck, Water Truck  
**\$10,900**

Mesa, AZ

## 2007 FREIGHTLINER BUSINESS CLASS M2 CHIPPER TRUCK in FONTANA, CALIFORNIA

DETAILS

SHIPPING

SHARE  
THISCONTACT  
SELLER
**Price: \$47,900**

INSTANT PURCHASE

**\$47,900**

BUY NOW

### Specification

Year:	2007
Make:	FREIGHTLINER
Model:	BUSINESS CLASS M2
Class:	CLASS 6 (GVW 19501 - 26000)
Category:	Chipper Truck
New/Used:	U
Price:	\$47,900

### Seller Information

#### Rush Truck Centers - Fontana

(866) 897-8804  
Reference Stock #:  
295638

15463 Valley Blvd  
Fontana, CA  
92335 [\(Map\)](#)



[See All Inventory](#) | [Visit Dealer Web Site](#)

Rush Truck Centers is the one-stop for all your trucking needs. Come see why no other dealership offers you more.

At Rush Truck Centers - **\*required**  
Fontana

Hello, I'm interested in your **2007**

**FREIGHTLINER BUSINESS CLASS M2**

Stock #: **295638**. Please contact me

at your earliest convenience  , you can

reach me at  Phone  or at

Email

### Comments

☐ I have a trade in

☒ Would you like to get our newsletter and special offers via email?  Thank you,  Full Name

9748

Type image number

Send

Send us Feedback!

### Find Similar Trucks [new search](#)



1999 Ford  
F650  
Chipper Truck  
**\$21,750**

Lynnwood, WA



2005 International  
4300  
Chipper Truck  
**\$32,000**

Stratford, CT



2005 International  
4200  
Chipper Truck  
**\$14,000**

Stamford, CT



2003 International  
4300  
Chipper Truck  
**\$12,000**

Stamford, CT



2006 International  
4300  
Chipper Truck  
**Call for Price**

BELLVILLE 77418, TX



2015 FORD  
F750  
Chipper Truck  
**\$63,521**

New Castle, DE



2014 FORD  
F650  
Chipper Truck  
**Call for Price**

New Castle, DE



2007 International  
4300DT  
Chipper Truck  
**\$48,000**

Alpharetta, GA



1987 FORD  
F600  
Chipper Truck  
**\$15,250**

Spring City, TN

### Description

2007 FREIGHTLINER BUSINESS CLASS M2 Chipper Truck, 2007 FREIGHTLINER BUSINESS CLASS M2 106 C7 Caterpillar Engine 210 hp; Diesel Fuel Type; 174,200 mi; 6 Spd; Spring Suspension; 16 ft Length; 11R22.5 Tires; 270 in Wheelbase; Steel Composition; 26,000 lb Gross Vehicle Weight; Drive Side: Left Hand Drive; NEW 16' CHIPPER DUMP W/ 60...

## 2009 INTERNATIONAL 4300DT CHIPPER TRUCK,DUMP TRUCK in WHITTIER, CALIFORNIA

DETAILS

SHIPPING

SHARE  
THISCONTACT  
SELLER

**Price: \$45,900** Specification

Year: 2009  
Make: INTERNATIONAL  
Model: 4300DT  
Class: CLASS 6 (GVWR 14,000 - 26,000)  
Category: Chipper Truck, Dump Truck  
Mileage: 173877  
New/Used: U

More

### Seller Information

#### Rush Truck Centers - Whittier - Used Trucks

(866) 479-2982  
Reference Stock #: 288670

2450 Kella Avenue  
Whittier, CA  
90601 (Map)



See All Inventory | Visit Dealer  
Web Site

At Rush Truck Centers - Whittier \*required  
- Used Trucks

Hello, I'm interested in your **2009**

**INTERNATIONAL 4300DT** Stock #:288670.

Please contact me

at your earliest convenience ✓, you can

reach me at Phone or at

Email

### Comments

☐ I have a trade in

☒ Would you like to  
get our newsletter Thank you,  
and special offers via Full Name \*

2 4 4 1

email?

Type image number

Send

Send us Feedback!

### Find Similar Trucks new search



**2007 FREIGHTLINER  
BUSINESS CLASS M2  
Chipper Truck,Dump Truck  
\$47,900**

Fontana, CA



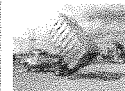
**2009 INTERNATIONAL  
4300DT  
Chipper Truck,Dump Truck  
\$45,900**

Whittier, CA



**2001 GMC  
C6500  
Chipper Truck,Dump Truck  
Call for Price**

South Beloit, IL



**2014 ADVANCED  
FABRICATORS  
16CHD72A  
Chipper Truck,Dump  
Truck,Flatbed  
Dump,Landscape  
Truck,Logging,Other Truck  
Bodies  
\$12,450**

Pompano Beach, FL



**1999 Ford  
F650  
Chipper Truck  
\$21,750**

Lynnwood, WA



**2005 International  
4300  
Chipper Truck  
\$32,000**

Stratford, CT



**2005 International  
4200  
Chipper Truck  
\$14,000**

Stamford, CT



**2003 International  
4300  
Chipper Truck  
\$12,000**

Stamford, CT

**2006 International  
4300**

### Description

2009 INTERNATIONAL 4300DT Chipper Truck,Dump Truck, JUST ARRIVED GREAT LOOKING 2009 INTERNATIONAL 4300 CHIPPER DUMP TRUCK WITH NEW UNIT THIS TRUCK IS AUTOMATIC TRANSMISSION DIESEL FUEL ONLY RUNS GREAT READY FOR WORK HAS A GVWR OF 26000 ENGINE IS A DT MAX FORCE FOR MORE INFO ON THIS TRUCK CONTACT THE SALES TEAM THANKS. Low APR financing for qualified buyers. We can supply all your commercial truck needs. We carry Ford, Isuzu, GMC, Freightliner, Hino, International, UD, Mitsubishi. Van Bodies, Stake Beds, Dump trucks, Flat Beds, Utility Service bodies, Refrigerated Trucks, Cargo Vans. Crew cab vehicles available also.